

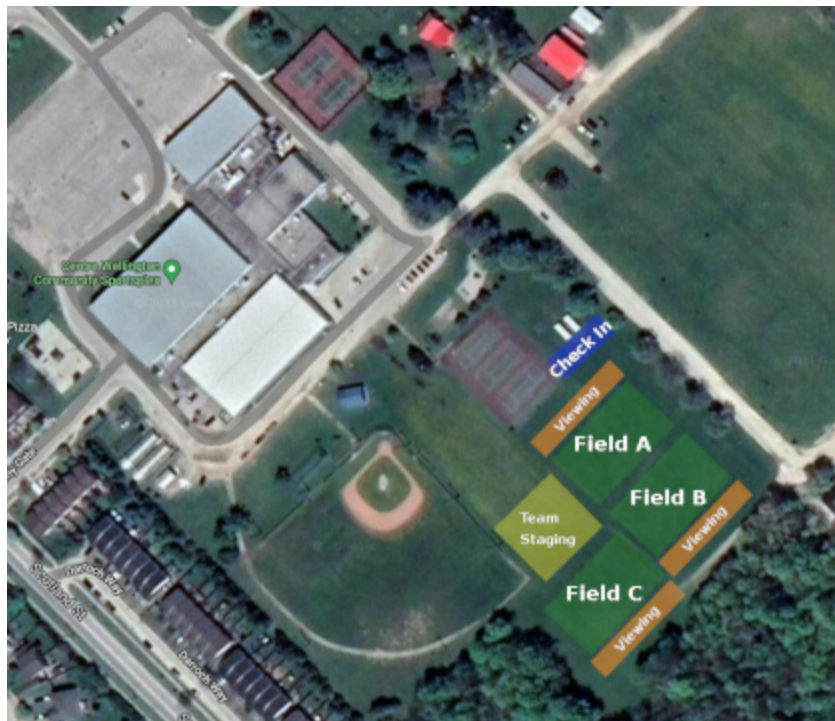


2021 Return-to-Play

Arrival & Departure Procedures Inclement Weather Policy

Arrival & Departure Procedures - Centre Wellington

We want to avoid congestion of participants as well as limiting cross contamination. Players will be required to complete the Centre Wellington Screening Form before entering the field. This year, this document is completed online at <https://www.centrewellington.ca/screening>. It is encouraged that they keep their equipment in the car, and only take their required equipment (i.e. water bottle) with them onto the field.



- Arrival to Staging
 - a. Parents/guardians are to drop off their participant in one of the parking areas behind the arena.
 - b. Participants will proceed to check-in with their respective divisional Safety/Hygiene manager. The form can simply be shown to this person once completed, on your device.



2021 Return-to-Play

Arrival & Departure Procedures Inclement Weather Policy

- c. The Safety/Hygiene manager will direct the participant along the old tennis courts to the team staging area.
- Staging to Training
 - a. Coaches will greet players and escort them to the training area players will be provided with a physically distanced training area at the facility.
- Training to Departure
 - a. After the participants' training has completed, participants will east towards the fields behind the arena for pickup by their parent/guardian.
- Parent / Guardian Parking and Viewing
 - a. Parking is available behind the arena, as well as along the roadway towards the training fields.
 - b. Parents may view games along the sidelines of the respective fields, but must remain physically distanced.
 - c. Parents should be paying attention at all times to avoid injury from flying balls.



2021 Return-to-Play

**Arrival & Departure Procedures
Inclement Weather Policy**

Inclement Weather Policy

Playing outside, we are bound to encounter all sorts of types of weather, we need to be prepared in-case adjustments need to be made to our programs.

Inclement weather: is weather that is harsh, wet and cold. Often this type of weather is accompanied by high winds. Keeping in mind that we are all playing relatively locally, the call to cancel games for the day will be made up to ½ hour before game time. However, it is important to watch our website (<https://www.cwmla.com/>) and social media feeds for updates if inclement weather has been forecasted (i.e. severe thunderstorms).

Thunderstorms: in the event that games are played in the rain, and lighting is sighted:

- If games are in their first half, players will return to their cars for a 30 minute break, games will resume in the second half if no lightning is sighted during their 30 minute break. If lightning is sighted again, the 30 minute break restarts. If the game is delayed for more than 40 minutes, the game is called, and the score at that point in time stands.
- If games are in the second half, the game is called, and the score at that point in time stands.